

HARRIS COUNTY FELONY PRETRIAL DETENTION REPORT

Brought to you by the Texas Criminal Justice Coalition and researchers at Harvard University

April 4, 2021 - April 10, 2021



Josh Hill – 232nd District Court

Among current pretrial jail inmates assigned to Judge Hill:

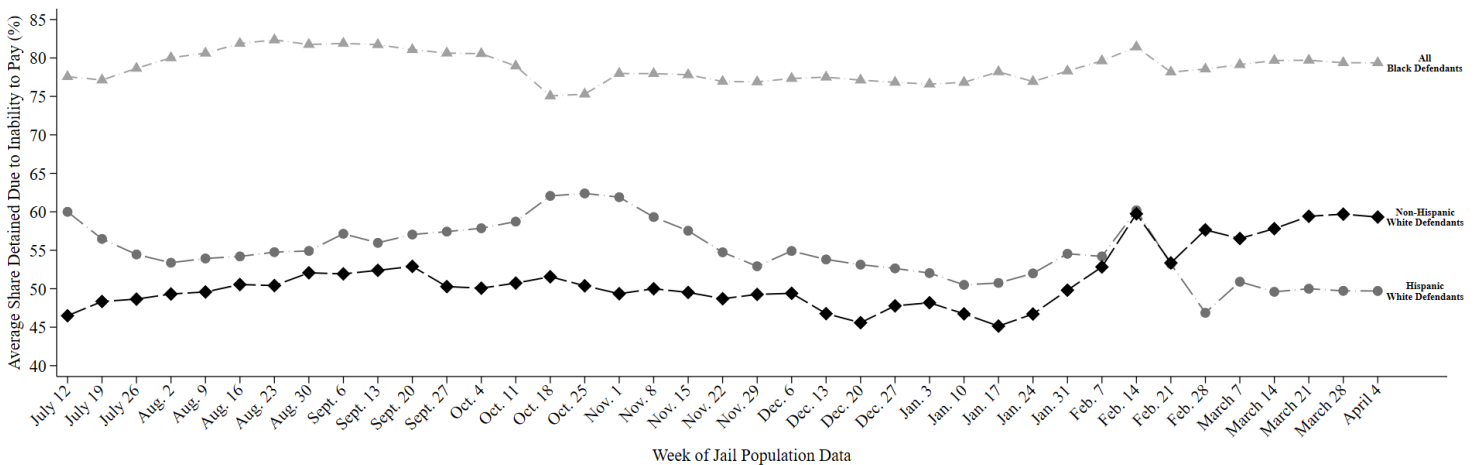
- **79% of Black defendants (108 out of 136)**
- **50% of Hispanic White defendants (25 out of 50)**
- **59% of non-Hispanic White defendants (55 out of 93)**

were detained per night based on inability to pay

Last week, among current pretrial jail inmates assigned to **Judge Hill**, **79% of Black defendants (108 out of 136 on an average night)**, **50% of Hispanic White defendants (25 out of 50 on an average night)**, and **59% of non-Hispanic White defendants (55 out of 93 on an average night)** were detained in Harris County Jail because they couldn't afford money bail.

Judge Hill's **racial difference in the share detained due to inability to pay for Black and Non-Hispanic White defendants** is among the **50% worst** in Harris County. His **racial difference in the share detained due to inability to pay for Hispanic and Non-Hispanic White defendants** is among the **50% worst** in Harris County.

Track Judge Hill's Share Detained Due to Inability to Pay



This report uses jail population data provided by Harris County. Share detained due to inability to pay represents the percent of current pretrial jail inmates assigned to this judge who were detained because they couldn't afford money bail.