

HARRIS COUNTY FELONY PRETRIAL DETENTION REPORT

Brought to you by the Texas Criminal Justice Coalition and researchers at Harvard University

November 22, 2020 - November 28, 2020



Herb Ritchie – 337th District Court

Among current pretrial jail inmates assigned to Judge Ritchie:

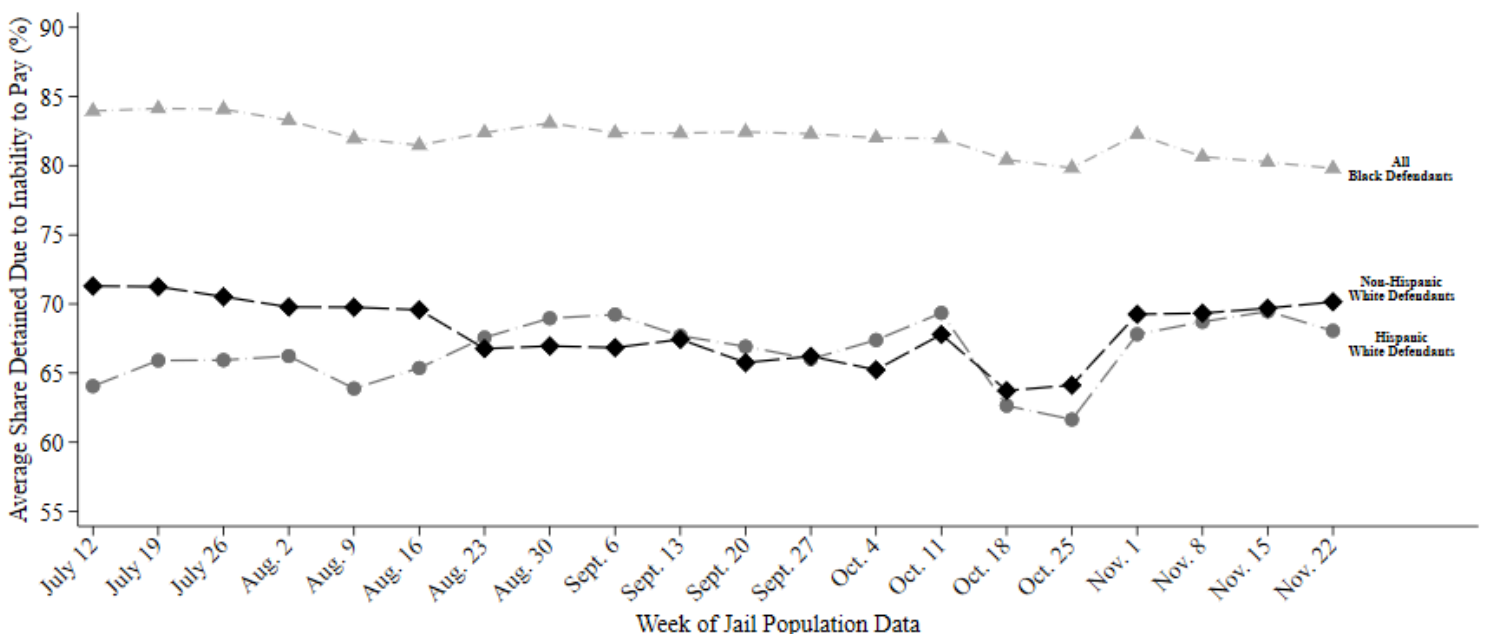
- **80% of Black defendants (151 out of 189)**
- **68% of Hispanic White defendants (30 out of 44)**
- **70% of non-Hispanic White defendants (71 out of 101)**

were detained per night based on inability to pay

Last week, among current pretrial jail inmates assigned to **Judge Ritchie**, **80% of Black defendants (151 out of 189 on an average night)**, **68% of Hispanic White defendants (30 out of 44 on an average night)**, and **70% of non-Hispanic White defendants (71 out of 101 on an average night)** were detained in Harris County Jail because they couldn't afford money bail.

Judge Ritchie's **racial difference in the share detained due to inability to pay for Black and Non-Hispanic White defendants** is among the **25% best** in Harris County. His **racial difference in the share detained due to inability to pay for Hispanic and Non-Hispanic White defendants** is among the **25% best** in Harris County.

Track Judge Ritchie's Share Detained Due to Inability to Pay



This report uses jail population data provided by Harris County. Share detained due to inability to pay represents the percent of current pretrial jail inmates assigned to this judge who were detained because they couldn't afford money bail.