

HARRIS COUNTY FELONY PRETRIAL DETENTION REPORT

Brought to you by the Texas Center for Justice and Equity and researchers at Harvard University

March 12, 2023 - March 18, 2023



Te'iva Bell – 339th District Court

Among current pretrial jail inmates assigned to Judge Bell:

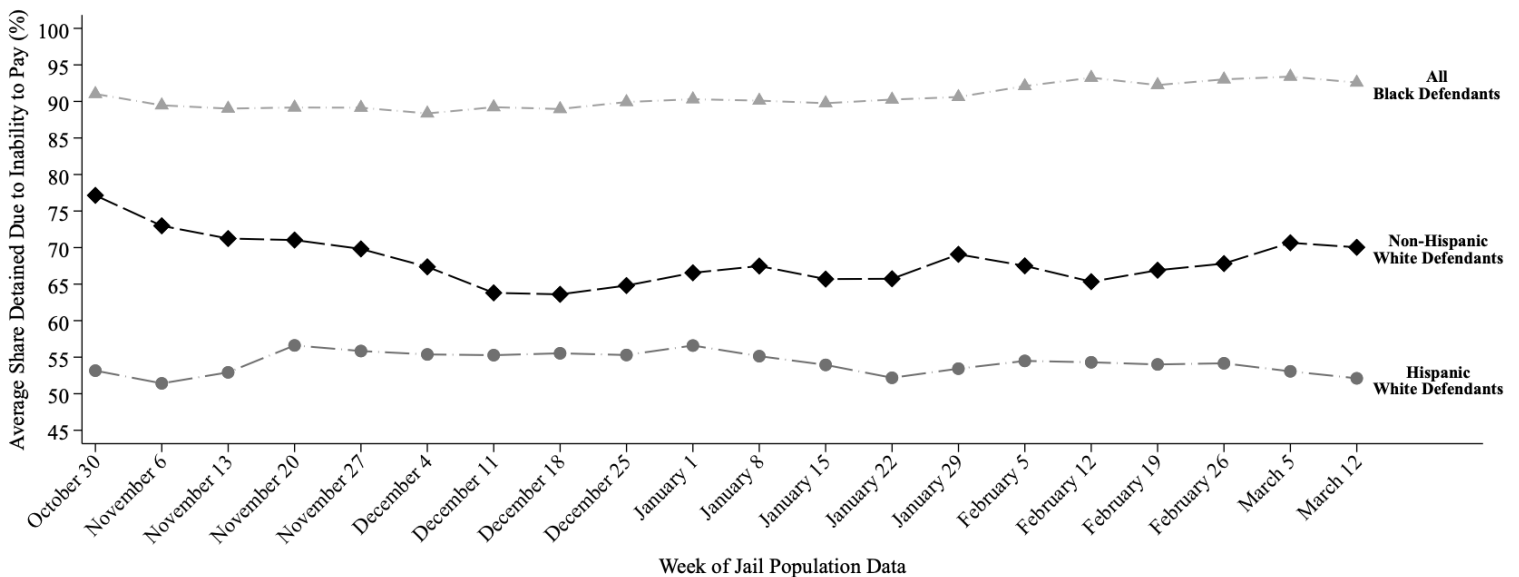
- **93% of Black defendants (100 out of 108)**
- **52% of Hispanic White defendants (35 out of 67)**
- **70% of non-Hispanic White defendants (31 out of 45)**

were detained per night based on inability to pay

Last week, among current pretrial jail inmates assigned to **Judge Bell**, **93% of Black defendants (100 out of 108 on an average night)**, **52% of Hispanic White defendants (35 out of 67 on an average night)**, and **70% of non-Hispanic White defendants (31 out of 45 on an average night)** were detained in Harris County Jail because they couldn't afford money bail.

Judge Bell's **racial difference in the share detained due to inability to pay for Black and Non-Hispanic White defendants** is among the **25% worst** in Harris County. Her **racial difference in the share detained due to inability to pay for Hispanic and Non-Hispanic White defendants** is among the **50% worst** in Harris County.

Track Judge Bell's Share Detained Due to Inability to Pay



This report uses jail population data provided by Harris County. Share detained due to inability to pay represents the percent of current pretrial jail inmates assigned to this judge who were detained because they couldn't afford money bail.